

Join us in

# *The Power of Warmth & Light*



*Let each generation tell its children of your mighty acts;  
let them proclaim your power. Psalm 145:4*

# The Power of Warmth & Light

## Case Statement

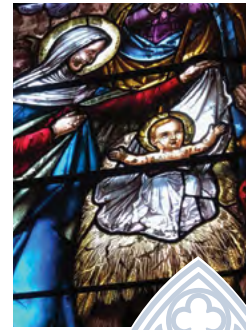
Over the last 171 years we have been blessed by the gifts of the thousands that have come before us. Those countless others worked and toiled to lay the foundation of this community, for themselves and for the generations that have followed, creating a welcoming place for all that have come to pray, to celebrate, to grieve, and to seek comfort and solace in times of need.

As the recipients of these innumerable gifts, we now have the opportunity to ensure that St. John's will continue to be a strong and safe community of faith for generations to come. As faithful stewards of this sacred space, it is our privilege and responsibility to maintain and care for our campus for generations yet to come.

**We currently have three areas of urgent need before us.**

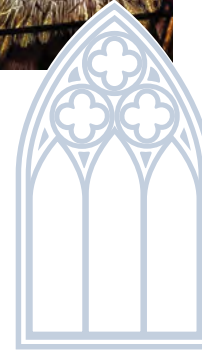


Scan QR code for a virtual tour of our areas of urgent need.



## Our Stained Glass Windows

Our beautiful and historic stained-glass windows have been neglected for many years. The Nativity and Ascension Window, at the rear of the Nave is the oldest window in St. John's and was installed in 1882. The windows on the north side of the Nave are the only other windows to have survived the fire and were installed between 1910 and 1933. All other windows were installed between 1947 and 1981. After years of exposure to the elements the lead and metal work that holds the glass in place has begun to weaken threatens the collapse of some windows in the church and auditorium. The cost of restorations starts at \$150,000.

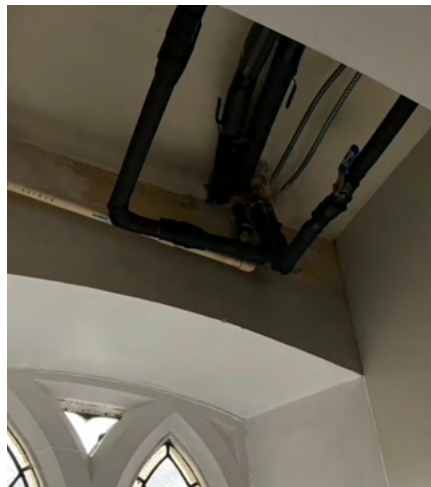
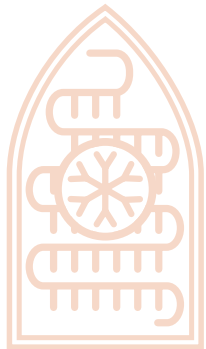


# Warmth

## HVAC

Our HVAC system is failing and in constant need of expensive repairs. The equipment is outdated and parts are difficult to obtain. The system has multiple leaks that have damaged both walls and floors and have promoted mold growth in the undercroft. The estimated cost of replacing the system for our entire campus is \$900,000 and will take several months to replace.

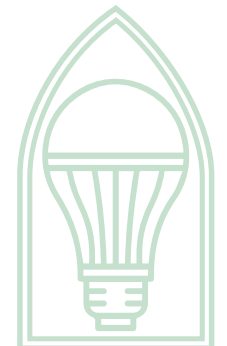
The new system will be energy efficient and place many of the registers and unsightly piping in the undercroft.



# Light

## Lighting

After the fire of 1939 the original six chandeliers were removed and the current configuration of lighting was installed in the Nave and Chancel. The bulbs required for the fixtures are no longer available. The system currently consists of 85 year-old 'knob and tube' wiring and fuses that are also not readily available. The estimated cost of replacement and re-wiring is \$150,000 and would include a similar configuration of lighting and more energy efficient bulbs that would require less frequent replacement. The electrical panel would also be replaced.



# Ways to Give

Over the next three years we need to raise \$1,200,000 to address these pressing issues. Your support is vital for us to continue to be good stewards of the many gifts we have been given by those that came before us. Help us light the way with your generous gift so that St John's can continue to be a safe haven for all those that seek comfort here.

## Suggested Gift

Weekly gift for 156 weeks

Monthly gift for 36 months

Annual gift for 3 years

We are also accepting non-cash gifts such as stock or investments. These gifts may offer you tax advantages and help us diversify our revenue streams. Please contact us if you are interested in this option.

Mail to:  
St. John's Episcopal Church  
321 W. Chestnut Street  
Lancaster, PA 17603



*2024 Capital Campaign*

**Saint John's Episcopal Church  
321 West Chestnut Street  
Lancaster, Pennsylvania 17603-3591**